

STANDARD MATERIAL STAGING LIST

Full list of all tools, components, materials that you should have are on this list.

General MT Exam Information

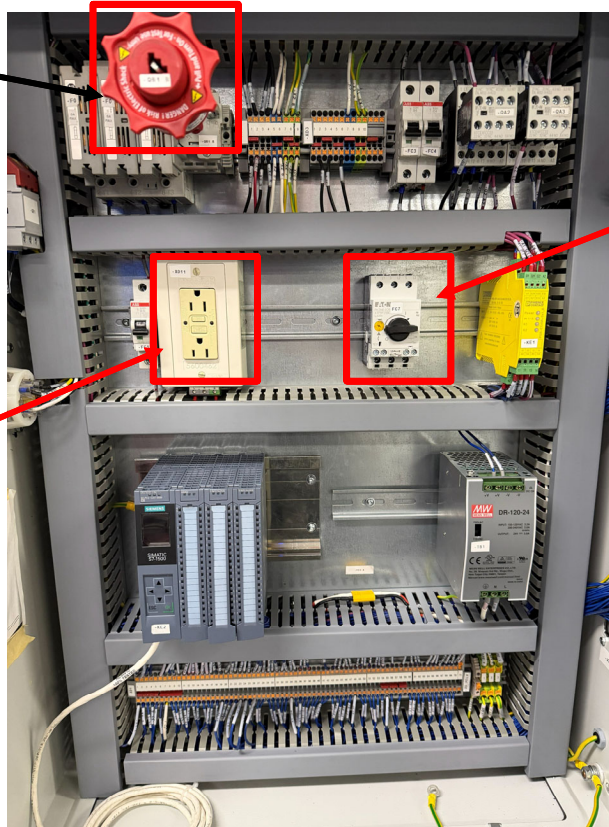
- ▶ [MT Phase 2 Distribution Day 2026](#) (April 10 PDF of PowerPoint)
- ▶ [MT Distribution Day Agenda 2026](#) (March 13 PDF) and video recording
- ▶ [MT Exam Kickoff 2026](#) (PDF of PP slides) and [Video Recording of MT Exam Kickoff 2026](#)
- ▶ [Mechatronics Exam Format and scoring overview](#)
- ▶ Part 1: [MT Standard Material Staging List](#)
- ▶ Part 2: [MT Standard Material Staging List 2026](#)
- ▶ Training and exam tools: [Quotation No. 24517142 Hoffmann Quality](#)



MT PART 1 ASSEMBLY – YELLOW LEVEL

YELLOW PART 1 CABINET – EXAM DAY

Good practice but not required (company specific)



Yes, this can be mounted even if it is not supposed to be wired in. Either way, make sure you have it, as it is a part of the standard material staging list.

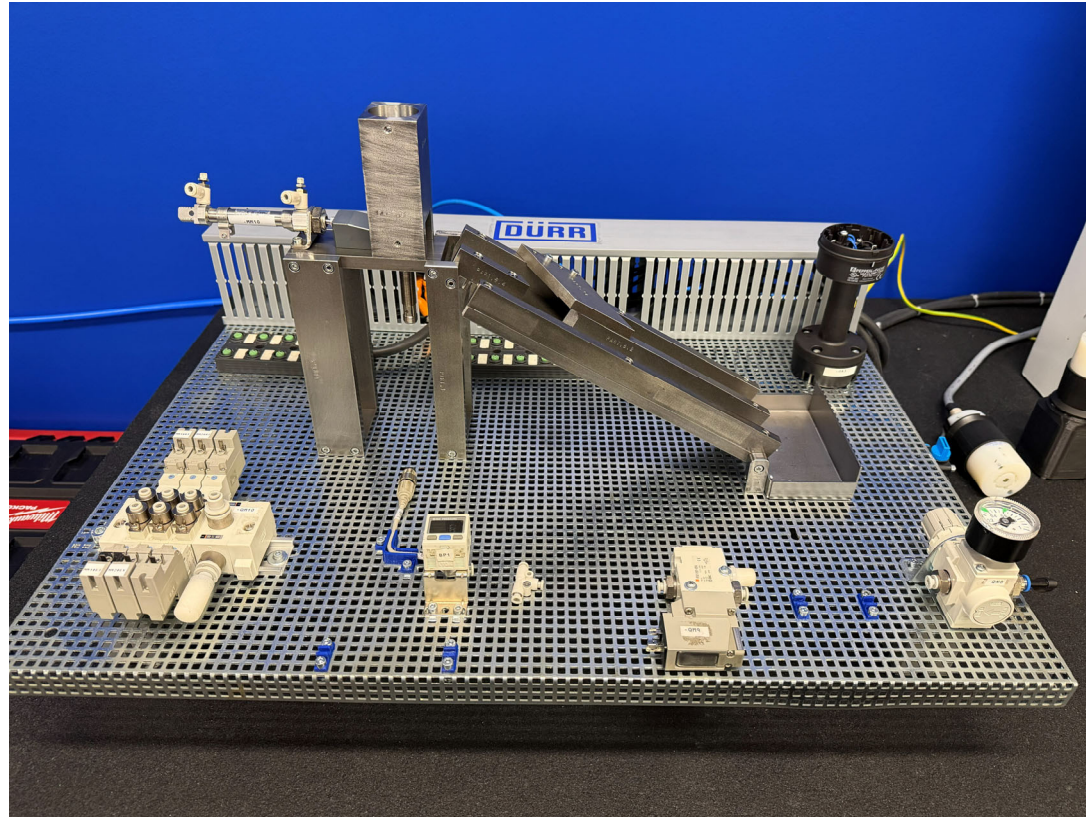
Yes, this can be mounted even if it is not supposed to be wired in, this year it is wired in and an RCD instead is ok

YELLOW PART 1 CONTROL PANEL – EXAM DAY



YELLOW PART 1 ASSEMBLY SIDE VIEW – EXAM DAY

No pre-cut or
pre labeled
hosing

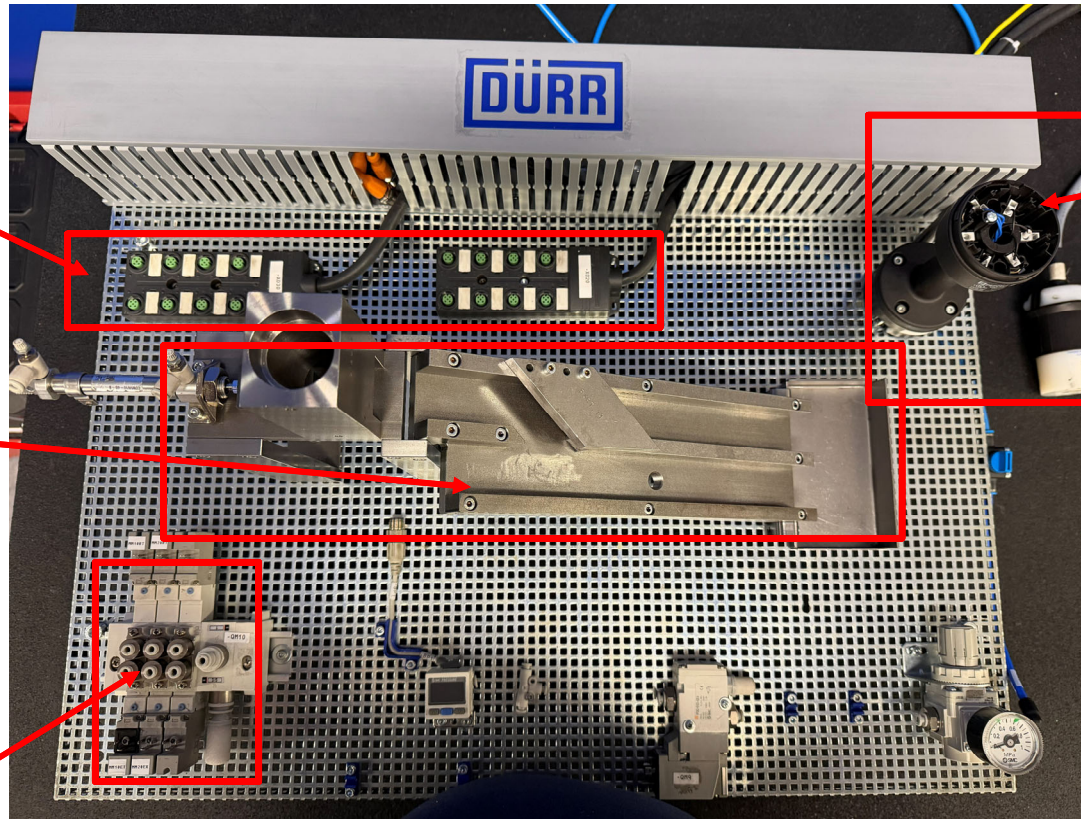


YELLOW PART 1 ASSEMBLY TOP VIEW – EXAM DAY

-XD20 and 30 may have T-distributors connected but the cables cannot be connected to the T-distributors

Chute should be assembled as seen here. Even though you know that 8.2 and 8.3 will be modified

Yes having plugs in here is also fine.



Stack light may be wired as seen here

No hosing on the assembly grid